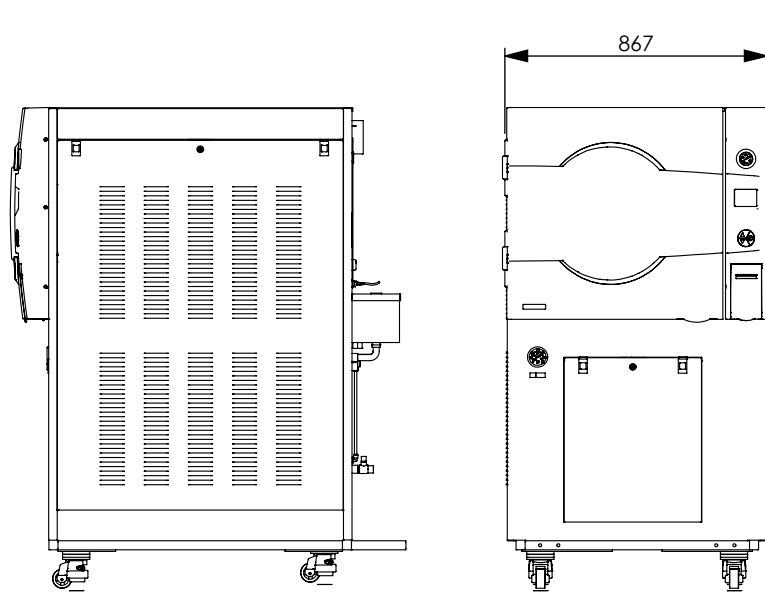
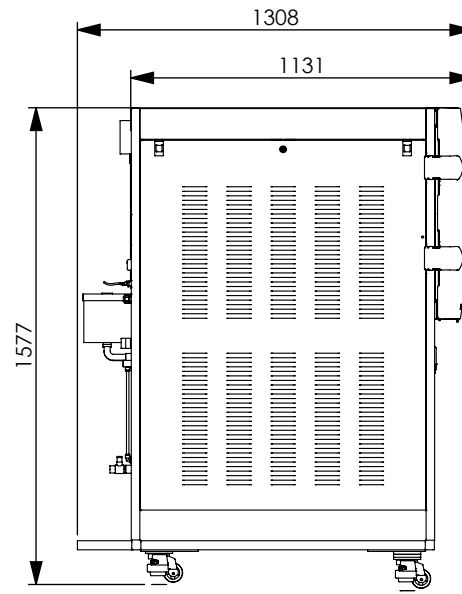


Model: 5075HSG-WS-D

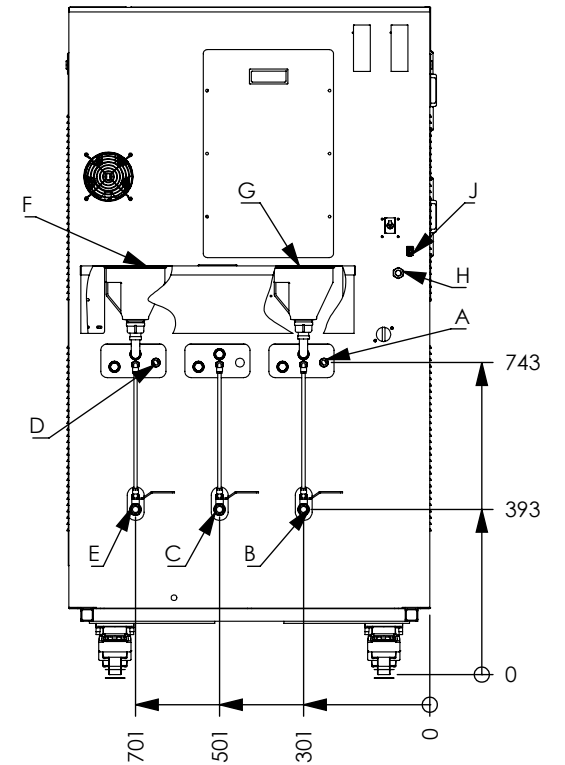


Right side view

Front view



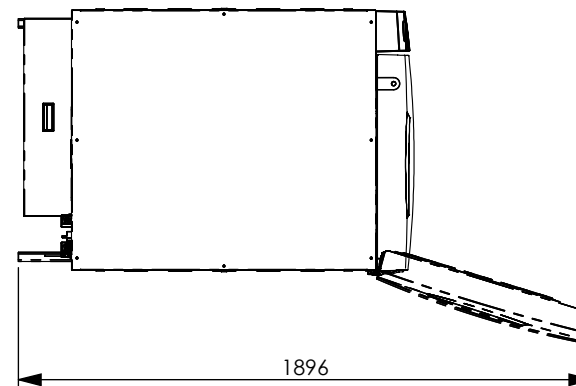
Left side view



Back view

Electric option	Standard	Optional (additional cost)
Voltage	380V/400V	208V/230V
Electric Power	9kW	9kW
Amperage	16A	25A
Phase	3 Ph	3 Ph

No.	Description	Size	Minimum Pressure
A	Tap water inlet -option	1/2" -Male	2 Bar
B	Tap water reservoir manual drain valve	-	-
C	Chamber drain manual drain valve	-	-
D	Mineral free water inlet-option	1/2" -Male	2 Bar
E	Mineral free water reservoir drain valve	-	-
F	Mineral free water inlet- into funnel	-	-
G	Tap water inlet - into funnel	-	-
H	Power supply	-	-
J	Ethernet port	RJ-45	-



Top view

Model	Chamber diameter x depth	Volume
5075 HSG-WS	500 x 750	160 Liter

Installation drawing