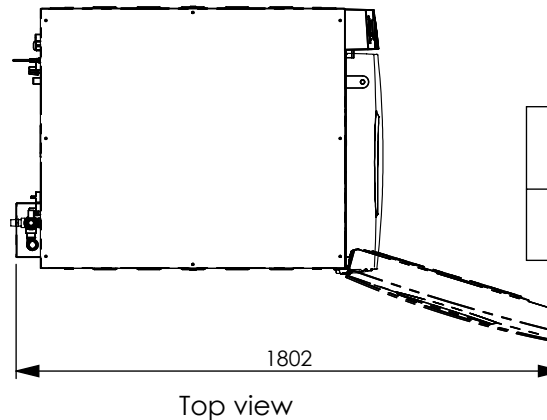
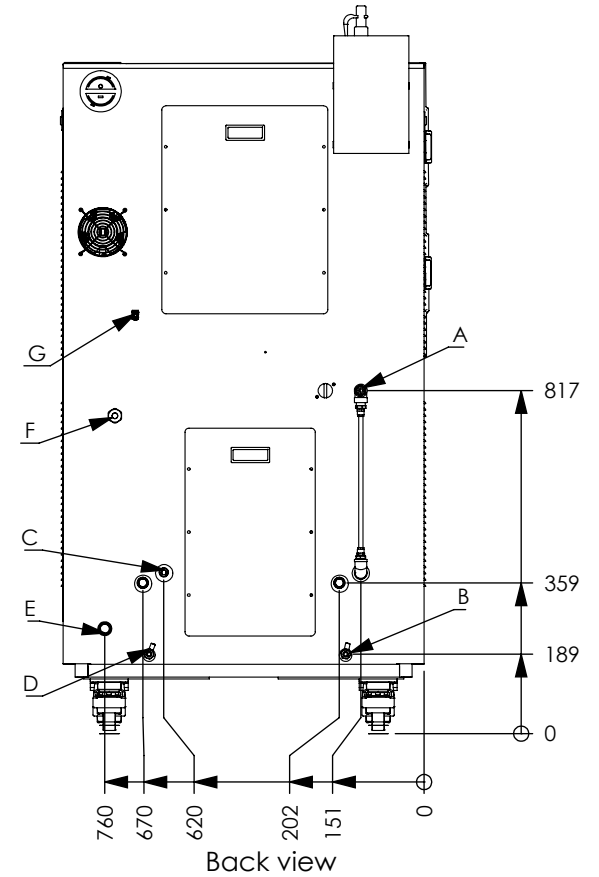
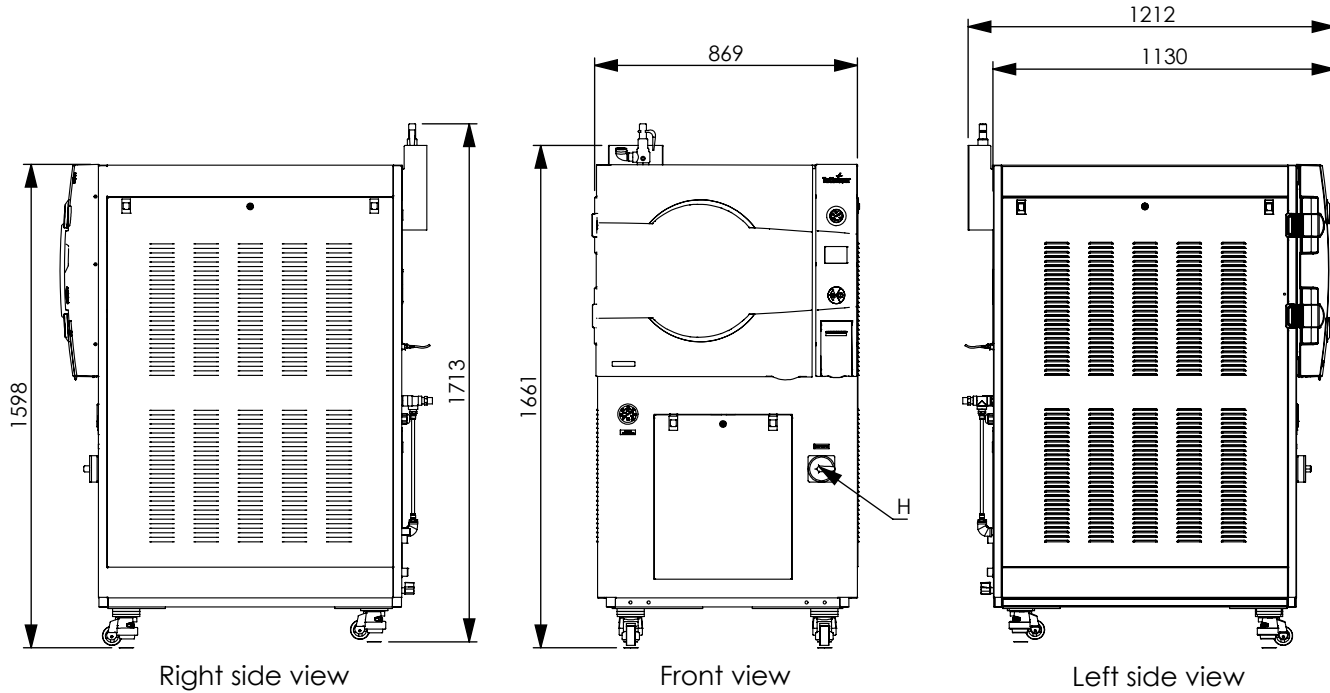


Model 5075HSG-D



Electric option	Standard	Optional (additional cost)
Voltage	380V/400V	208V/230V
Electric Power	18kW	18kW
Amperage	29A	53A
Phase	3 Ph	3 Ph

No.	Description	Size	Minimum Pressure
A	Tap water inlet for vacuum pump	1/2" - Male	2 Bar
B	Water reservoirs manual drain valve	1/4" - Female	-
C	Mineral free water inlet	1/2" - Male	2 Bar
D	Water reservoirs manual drain valve	1/4" - Female	-
E	Chamber and generator drain	3/4" - Male	-
F	Power supply	-	-
G	Ethernet port	RJ-45	-
H	Generator main switch	-	-

Model	Chamber diameter x depth	Volume
5075 HSG	500 x 750	160 Liter