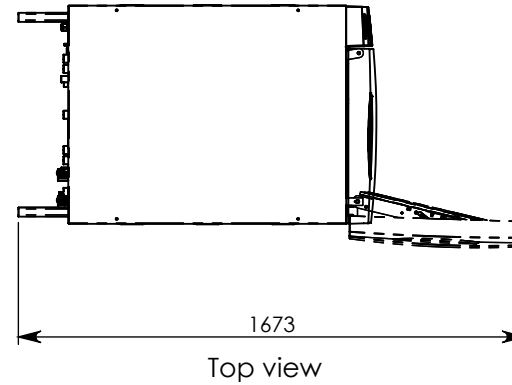
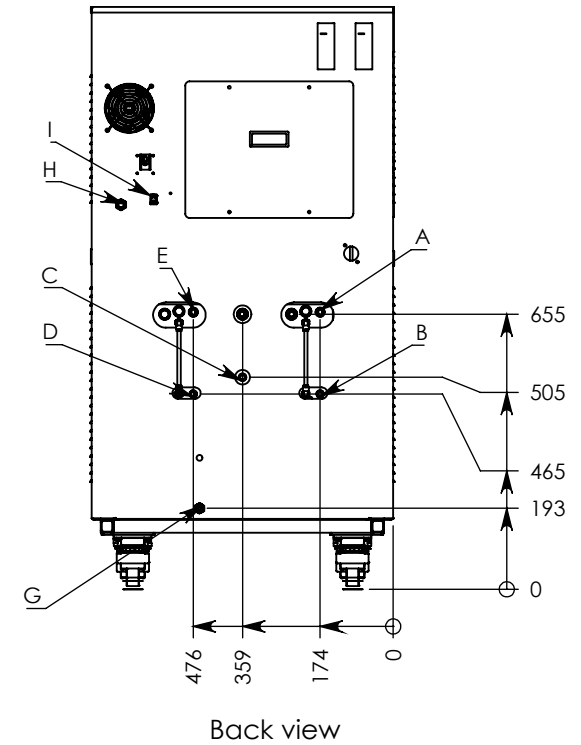
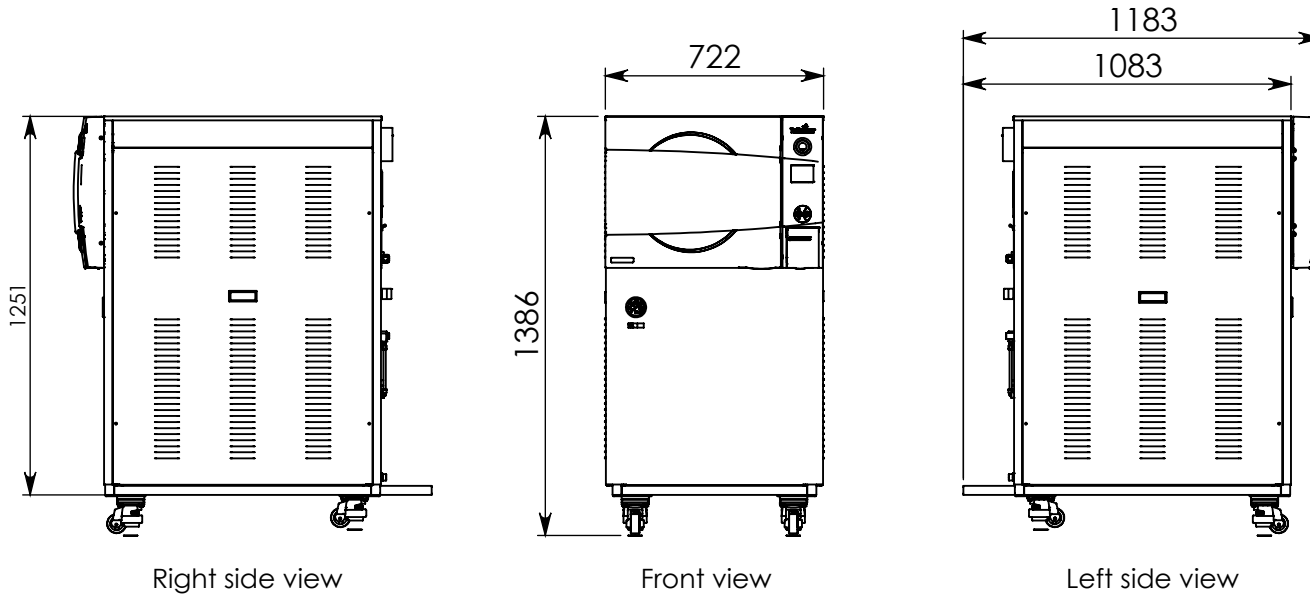


Model 3870HSG-D



| Electric option | Standard | Optional (additional cost) |
|-----------------|-----------|----------------------------|
| Voltage | 380V/400V | 208V/230V |
| Electric Power | 9kW | 9kW |
| Amperage | 16A | 25A |
| Phase | 3 Ph | 3 Ph |

| No. | Description | Size | Minimum Pressure |
|-----|-------------------------------------------|-------------|------------------|
| A | Tap water inlet for reservoir vacuum pump | 1/2" - Male | 2 Bar |
| B | Tap water reservoir manual drain valve | 1/2" - Male | - |
| C | Drain reservoir manual drain valve | 1/2" - Male | - |
| D | Mineral free water manual drain valve | 1/2" - Male | - |
| E | Mineral free water inlet | 1/2" - Male | 2 Bar |
| G | Generator drain | 1/2" - Male | - |
| H | Power supply | - | - |
| I | Ethernet port | RJ-45 | - |

| Model | Chamber diameter x depth | Volume |
|----------|--------------------------|----------|
| 3870 HSG | 380 x 700 | 85 Liter |